

Bright. Clear. True.



PANOVIEW
ULTRA

The high-resolution telescope generation
for white light and fluorescence imaging



Bright. Clear. True.

The latest generation of high definition optics housed in the **PANOVIEW ULTRA** is optimized for an ultra high definition (4K) image through the enhanced delivery of light to the surgical field. The development of innovative materials delivers brightness and clarity beyond expectations.

Clearly Brilliant

The **PANOVIEW ULTRA** telescopes are built with extra low dispersion glass rod lenses which control chromatic aberrations and enhance image quality.

The effect is a drastically improved sharpness on the image's periphery, as well as an balanced sharpness gradient over the wide field of view and deep focal range.

With this generation of telescopes a perfect balance between depth of field and light intensity has been achieved to transport an an optimal image quality.

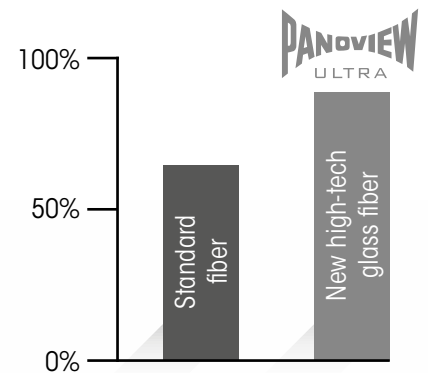
Strikingly Bright

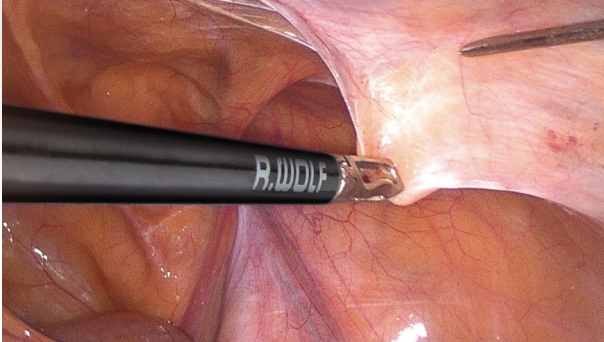
The demand for the ultra high resolution imaging in the operating room requires that telescopes transmit more light.

The **PANOVIEW ULTRA** telescope houses an increased number of advanced optical glass fibers, capable of superior light transmission compared to other fiber optic technologies. With the addition of more fibers, the endoscopic surgical site receives optimal illumination.

Additionally they have the decisive advantage of a longer lifetime during autoclaving.

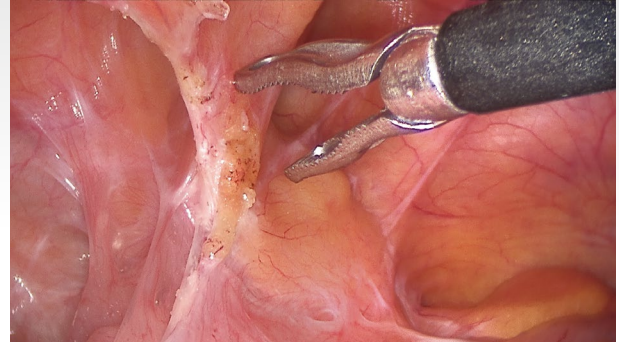
Light transmission after 500 autoclave cycles





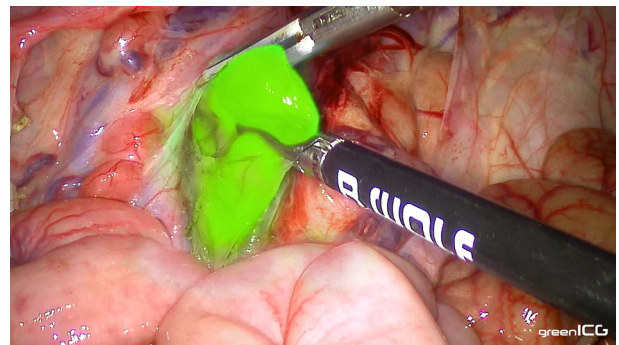
Truly Natural

Telescopes can be responsible for chromatic aberrations, but **PANOVIEW ULTRA**'s glass fibers guarantee an advantageous white-light, natural impression and setting a new color rendering standard.



Simple Handling

The **PANOVIEW ULTRA** telescopes can be used with the same light cable recommended for 10 mm diameter telescopes. Color coding on the connectors also make matching the correct light cable with the appropriate telescope an intuitive task.



System green

Fluorescence Imaging

The latest PANOVIEW ULTRA telescope generation is not only optimized for a high-resolution 4K image (white light), but also for the ICG / NIR application with System green from Richard Wolf. Regardless of the mode, whether greenICG (white light image with ICG overlay) or greenICG pure (grey scale image with ICG overlay), the telescopes are also convincing in fluorescence imaging.

Telescopes

PANOVIEW ULTRA Telescope, Ø 10 mm,

WL 305 mm

0° **8934461**

30° **8934462**

50° **8934463**

WL 440 mm

0° **89344416**

30° **89344426**

50° **89344436**

PANOVIEW ULTRA Telescope, Ø 5,5 mm,

WL 300 mm

0° **8935561**

30° **8935562**



PANOVIEW ULTRA Telescope, Ø 5.5 mm*,

WL 300 mm

0° **8935461**

30° **8935462**

WL 430 mm

0° **89354416**

30° **89354426**

*Not ICG capable

Subject to modifications. Please note that some products may not be available in all countries. Please always take note of the information that is provided with the product. For more detailed information, please consult with your contact partner or directly with Richard Wolf GmbH.

Recommended light cables

Fiber Light Cable complete,

Ø 3.5 mm, 2.3 m long

(recommended for telescopes with Ø 5.5 mm)

comprising:

Fiber Light Cable (80663523),

Adapter projector-side (8095.07)

and Adapter endoscope-side (809509) **806635231**

Fusion Fiber Light Cable complete,

Ø 5.0 mm, 2.3 m long

comprising:

Fusion Fiber Light Cable (80655023),

Adapter projector-side (8095.07)

and Adapter endoscope-side (809509) **806550231**

Accessories

Perf. Basket for Standard Telescope 2,

(w x h x d) 481 x 59 x 54 mm **38016**

Perf. Basket for Standard Telescope 3,

(w x h x d) 619 x 59 x 54 mm **38017**

